



SHUA E7 SILENT RUNNER TREADMILL

SKU: SH-T399





PRODUCT DESCRIPTION

SHUA E7 SMART TREADMILL

Brand new design improvements
Integrate easily into any home



EASY SPEED AND INCLINE ADJUSTMENTS

Rotational dial not only provides quick adjustments, it display the mode as well



660
mm
Wide Deck

480
mm
Wide Belt

90
mm
Anti-slip
Side Rails



**Better running belt brings
better feel while running**

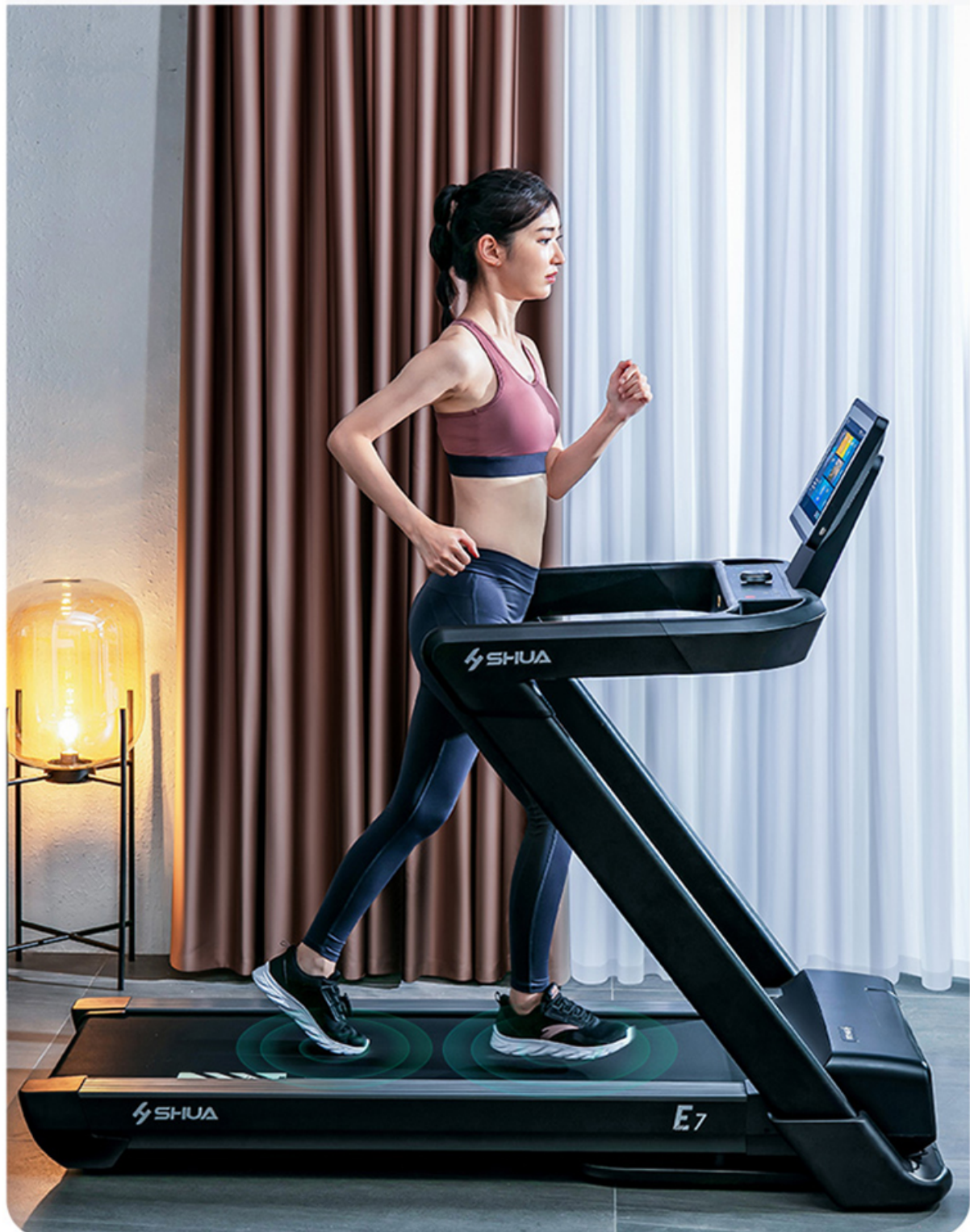
MOTOR ASSISTED INCLINE

12 LEVELS ADJUSTMENT



PROTECTIVE & BOUNCY RUNNING DECK

MADE OF HIGH DENSITY FIBRE BOARD.
EASY AND QUIET RUNNING EXPERIENCE.





Easy Folding-up



2.5 HP Strong Drive

Makes the running fluent and smooth



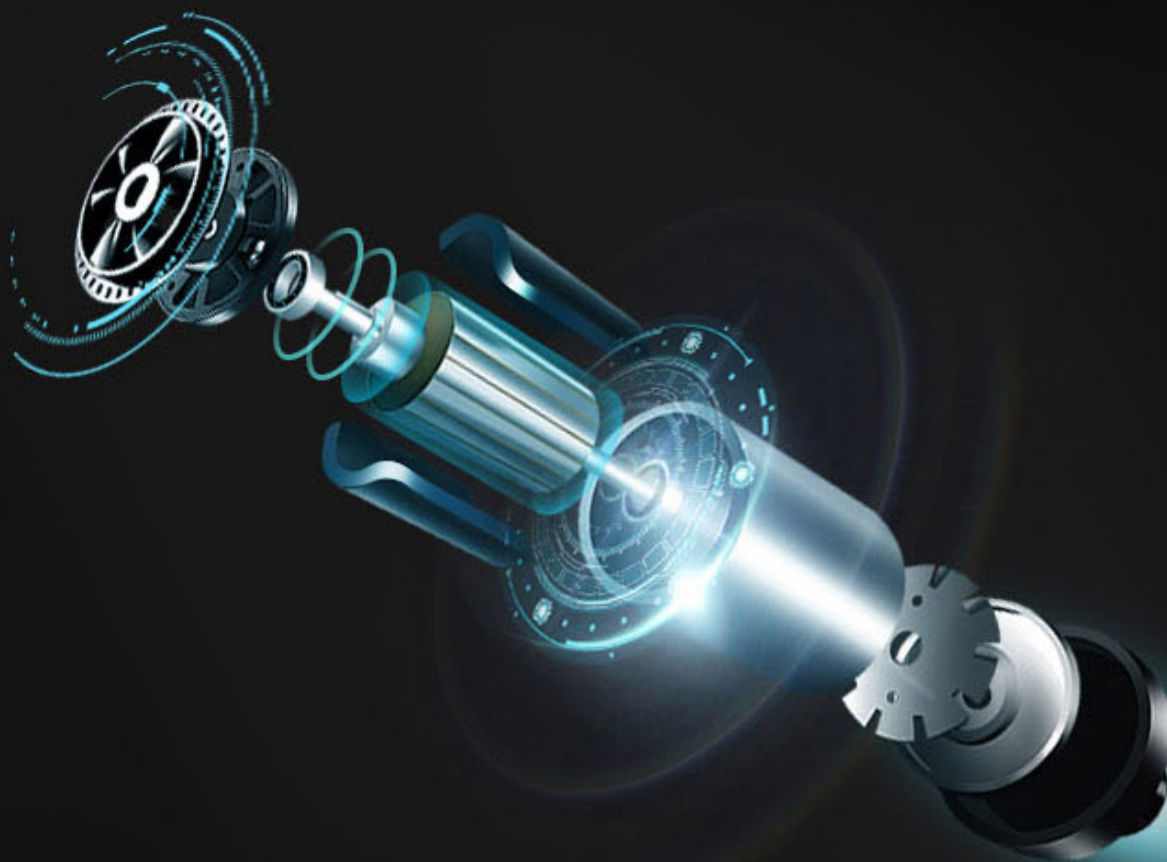
Energy Saving



Low Noise



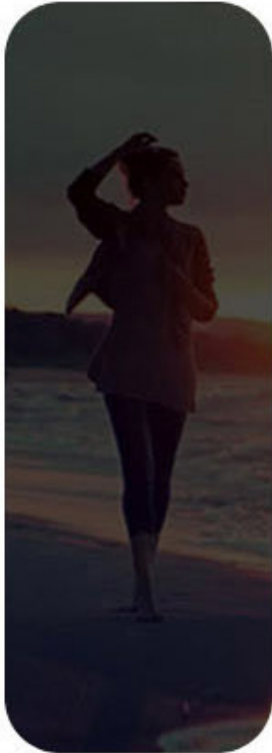
High HP





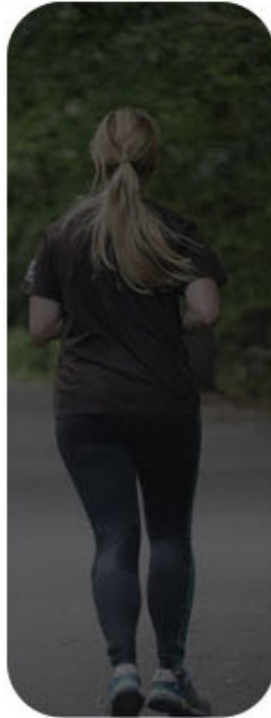
0.5 to 16 KM/H

Meets all types of running requirements



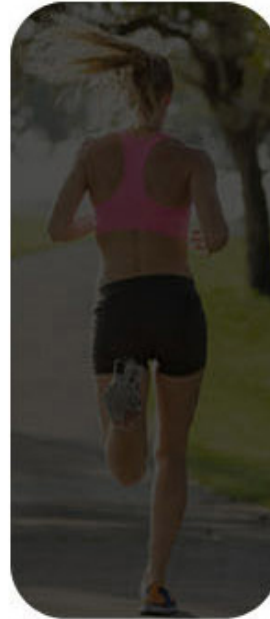
0.5-3km/h

Stroll



4-6km/h

Cardio



7-10km/h

Intensive



11-16km/h

Professional



ABOUT SHUA FITNESS

Shua Fitness is the leading fitness brand in China, with more than 22 years of history. Across Asia, many gyms and hotels use Shua equipment and they have proven to be lasting and value for money. Their design is practical and ergonomic, with heavy focus on R & D and quality.

Domestically, Shua has more than 1000 retail stores across the country, with a comprehensive after-sales service system.

Internationally, Shua business covers more than 60 countries and regions, including Europe, America, Middle East and Southeast Asia, providing OEM services to many popular brands like Costco, Dicks Sporting Goods, Body-Solid, LifeGear, Hammer Sport AG and many more.

WHY CHOOSE SHUA

Shua is a brand that has a long history and one of the biggest in China. It is more value as compared to many other international brands which OEM from other China factories, in terms of not only price, but quality and after-sales support.



ADDITIONAL INFORMATION

More Information

Warranty	Frame: Lifetime, Main motor: 4 years, Other parts: 1 year, On-site labour: 1 year
Speed	0.5-16 km/h Quick Speed Controls
Product Dimension	172 x 85 x 145 cm, Folded: 107 x 85 x 150cm (L x W x H)
Max Load	126kg
Product Weight	88kg
More Information	Tablet holder, USB charging, speaker
Motor Power	2.5 HP DC Motor
Incline	12% Quick Incline Controls
Running Area	48 x 135cm