



ADIDAS T-23 BLUETOOTH TREADMILL

SKU: AVUS-10621



KINOMAP COMPATIBLE
Run real-world routes
and take on challenges



ADIDAS CONSOLE+
The ultimate cardio
workout companion



ZWIFT COMPATIBLE
An immersive online
running experience





PRODUCT
DESCRIPTION

ADIDAS ULTRA SERIES



CREATE ENERGY

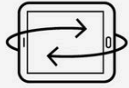
T-23 TREADMILL

Redefines home cardio
workouts with the latest
treadmill technology





ROTATING TABLET HOLDER



Rotating tablet / phone holder makes it easy to follow classes & exercises both on and off the treadmill



ZWIFT COMPATIBLE



Immersive, video game style running



1000+ workouts curated by elite coaches



Global connectivity with group runs & races



*Zwift subscription required



Exclusive offer: **60-DAYS FREE** membership

Redeem your in-box subscription code within the Kinomap app to activate

KINOMAP COMPATIBLE



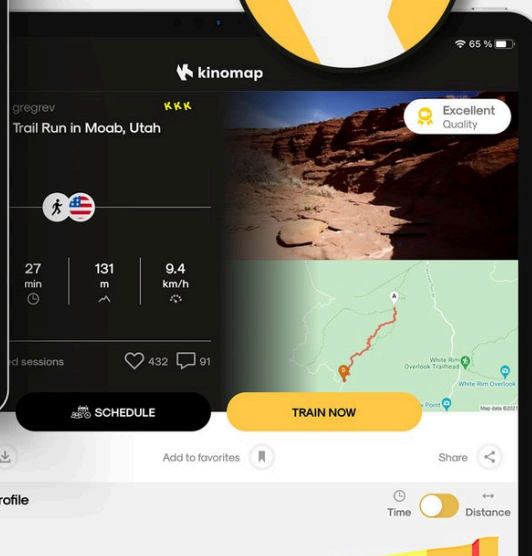
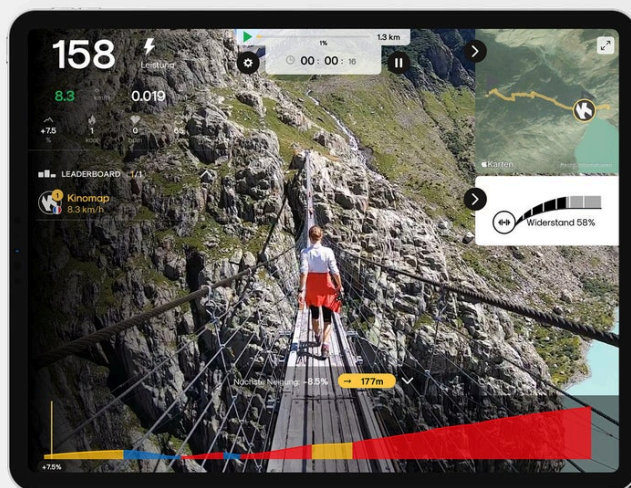
Run all over the world with 1000s of real routes



Workouts, coaching & interval training



Challenge your friends with multiplayer mode & share your achievements



*Kinomap subscription required



ADIDAS CONSOLE+

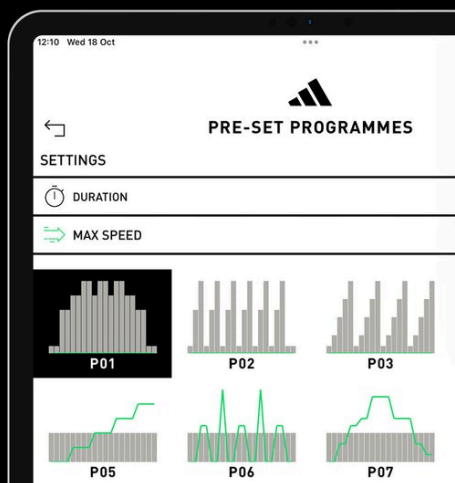


Connects to your treadmill via your phone or tablet, for enhanced console features & workout tracking



Sync workout data with Apple Health, Google Fit, Strava, and more

**WATCH THE
APP VIDEO**





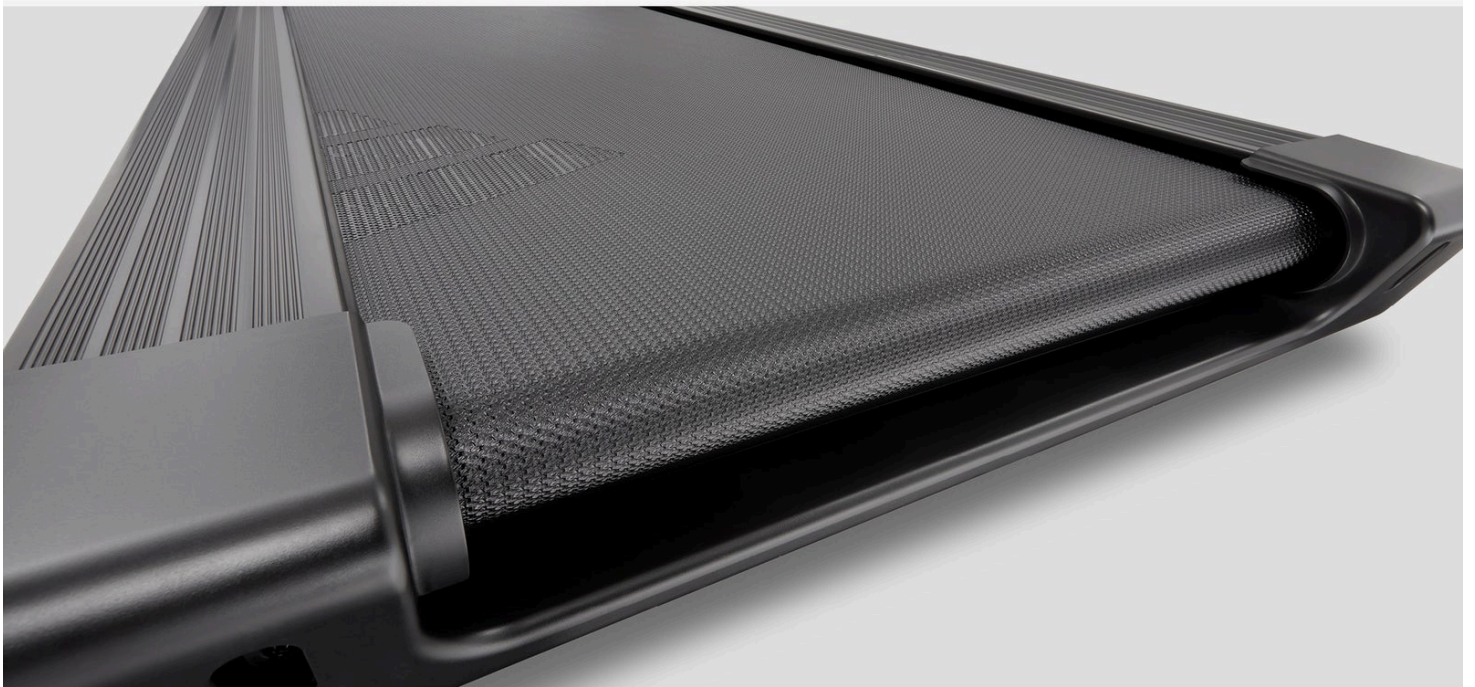
NRG CUSHIONING TECH



NRG cushioning technology helps to soften the impact on sensitive joints



Orthopaedic running belt further cushions the running surface





TAILOR + TRACK



15 electronic incline levels to adjust elevation



Console feedback: speed, time, distance, calorie, pulse, incline, and heart rate



24 pre-set, 3 custom and 3 target programmes





ADDITIONAL FEATURES



Hassle-free
self-lubricating
running belt



Integrated pulse
sensors on the
handles



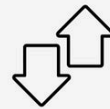
Recyclable &
polystyrene
free packaging



Easy to move
around with
built-in wheels



Dependable build
quality - 150kg
max. user weight



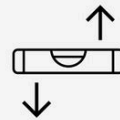
Quick access
speed &
incline buttons



USB
charging port



2 water
bottle holders



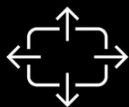
Floor level
adjustment



SETUP



Fixed running deck provides a stronger and more stable platform



Spacious 150 x 52cm running area

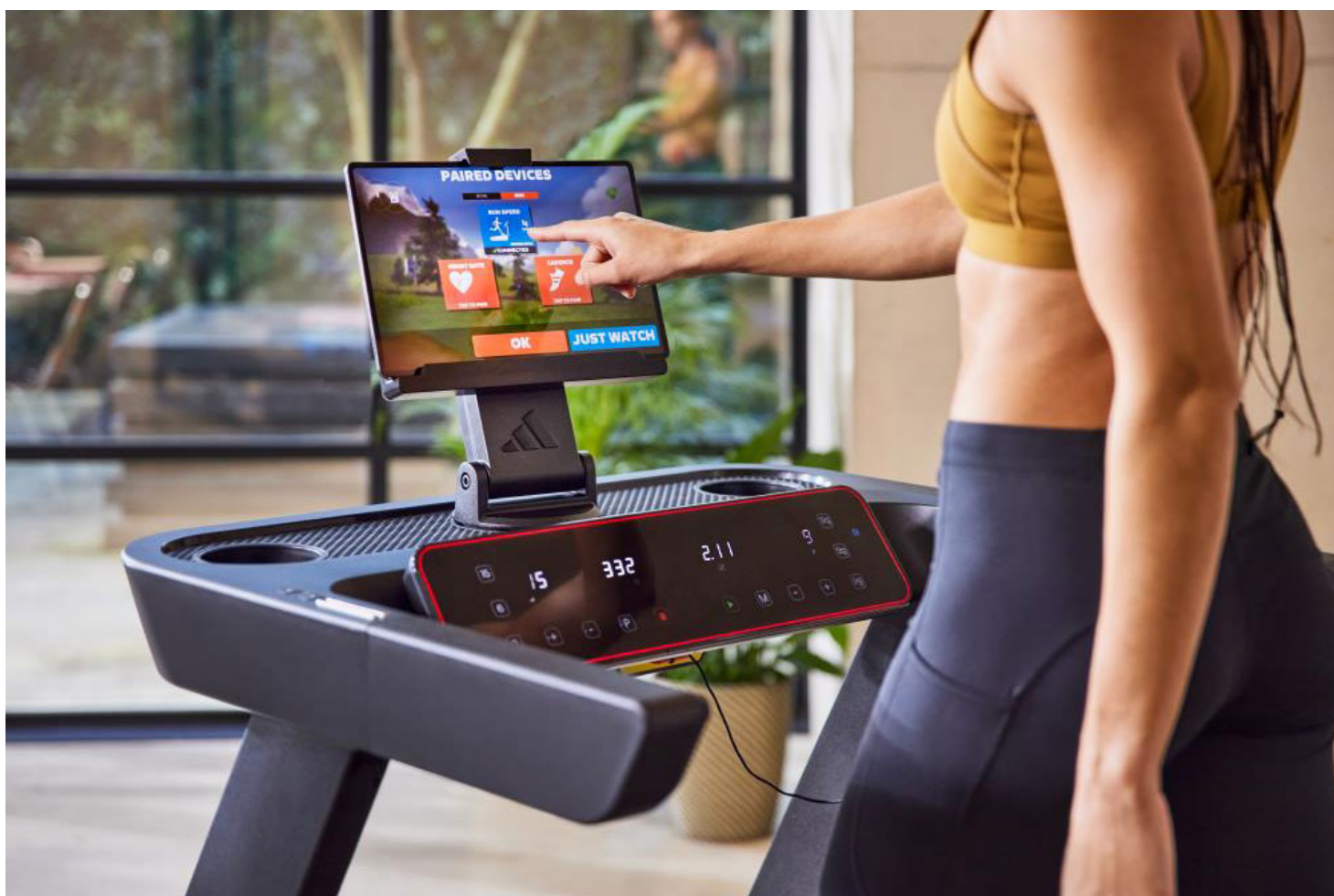


- 1 - 20 kph (0.6 - 12.4 mph) speed range takes you from a gentle walk to a fast sprint
- Powerful 4.5 HP brushless motor is lighter, quieter and more efficient than a standard motor
- 15 levels of electronic incline allow you to adjust the elevation and increase the challenge
 - Fitness programmes include 24 pre-set, 3 custom and 3 target
 - Quick speed and incline buttons on the handles create sharp interval transitions
- Integrated rotating tablet/phone holder allows you to follow workouts both on and off the T-23
- Zwift compatible - immersive running experience connects you with runners across the globe
 - Kinomap compatible - run real-world routes, challenge your friends, and analyse workouts
 - adidas Console+ - access training apps, take-on workouts, and analyse your data
- Sleek LED console with speed, time, distance, calorie, pulse, incline, and heart rate feedback
 - Integrated hand pulse sensors allow you to quickly check your pulse on the move
- NRG cushioning technology softens impacts and helps to reduce strain on sensitive joints
 - Orthopaedic running belt further cushions the running surface
- Signature adidas Ultra Series red LED lighting surrounds the motor hood and console



- Spacious running area of 150 x 52 cm makes it suitable for runners of all heights
- Surround sound Bluetooth speakers wirelessly connect to your device for high-quality audio
- Integrated USB charging port allows you to keep your devices charged while running
 - Two water bottle holders ensure you can easily stay hydrated
- Fixed running deck provides a stronger and more stable training platform
 - Dependable build quality results in a high max. user weight of 150kg
- Built-in transport wheels make it easy to move the treadmill around your home
 - Packed in recyclable and polystyrene-free packaging
- Product Dimensions - 192.5 (L) x 81.5 (W) x 138.5 (H) cm / 75.8 (L) x 32.1 (W) x 54.5 (H) in.
 - Self-lubricating running belt allows for hassle-free maintenance
- Simple 25-minute setup with easy to follow assembly instructions and all tools included

Lifestyle Photos







ADDITIONAL INFORMATION

More Information

Program	Fitness programmes include 24 pre-set, 3 custom and 3 target
Foldable	No
Warranty	Mainframe: 5 years, Motor: 4 years, Other parts: 1 year
Panel Design	Sleek LED console with speed, time, distance, calorie, pulse, incline, and heart rate feedback
Speed	1 - 20 kph
Product Dimension	192.5 (L) x 81.5 (W) x 138.5 (H) cm
Max Load	150kg
Motor Power	4.5 HP
Incline	15%
Running Area	150 (L) x 52 (W) cm