



ADIDAS T-23 BLUETOOTH TREADMILL

SKU: AVUS-10621





PRODUCT
DESCRIPTION

ADIDAS ULTRA SERIES



CREATE ENERGY

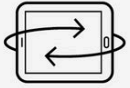
T-23 TREADMILL

Redefines home cardio workouts with the latest treadmill technology





ROTATING TABLET HOLDER



Rotating tablet / phone holder makes it easy to follow classes & exercises both on and off the treadmill





ZWIFT COMPATIBLE



Immersive, video game style running



1000+ workouts curated by elite coaches



Global connectivity with group runs & races



*Zwift subscription required





Exclusive offer: **60-DAYS FREE** membership
Redeem your in-box subscription code within the Kinomap app to activate

KINOMAP COMPATIBLE



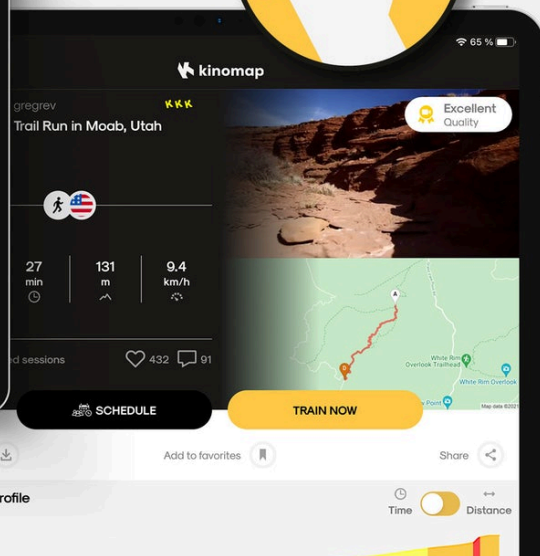
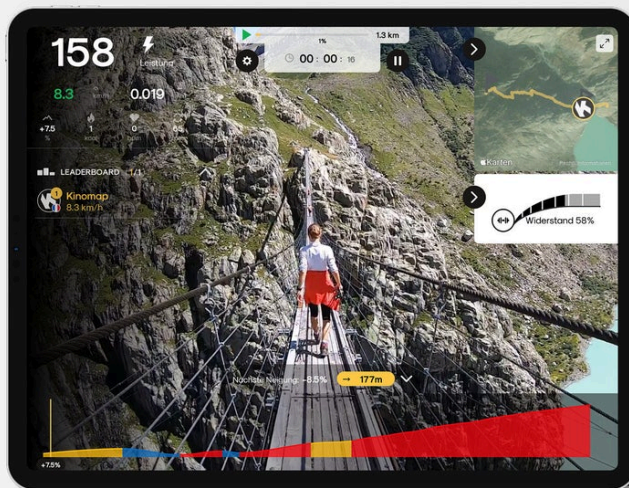
Run all over the world with 1000s of real routes



Workouts, coaching & interval training



Challenge your friends with multiplayer mode & share your achievements



*Kinomap subscription required



ADIDAS CONSOLE+

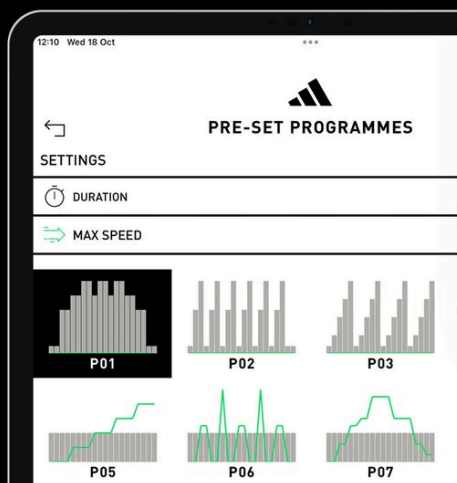


Connects to your treadmill via your phone or tablet, for enhanced console features & workout tracking



Sync workout data with Apple Health, Google Fit, Strava, and more

WATCH THE APP VIDEO





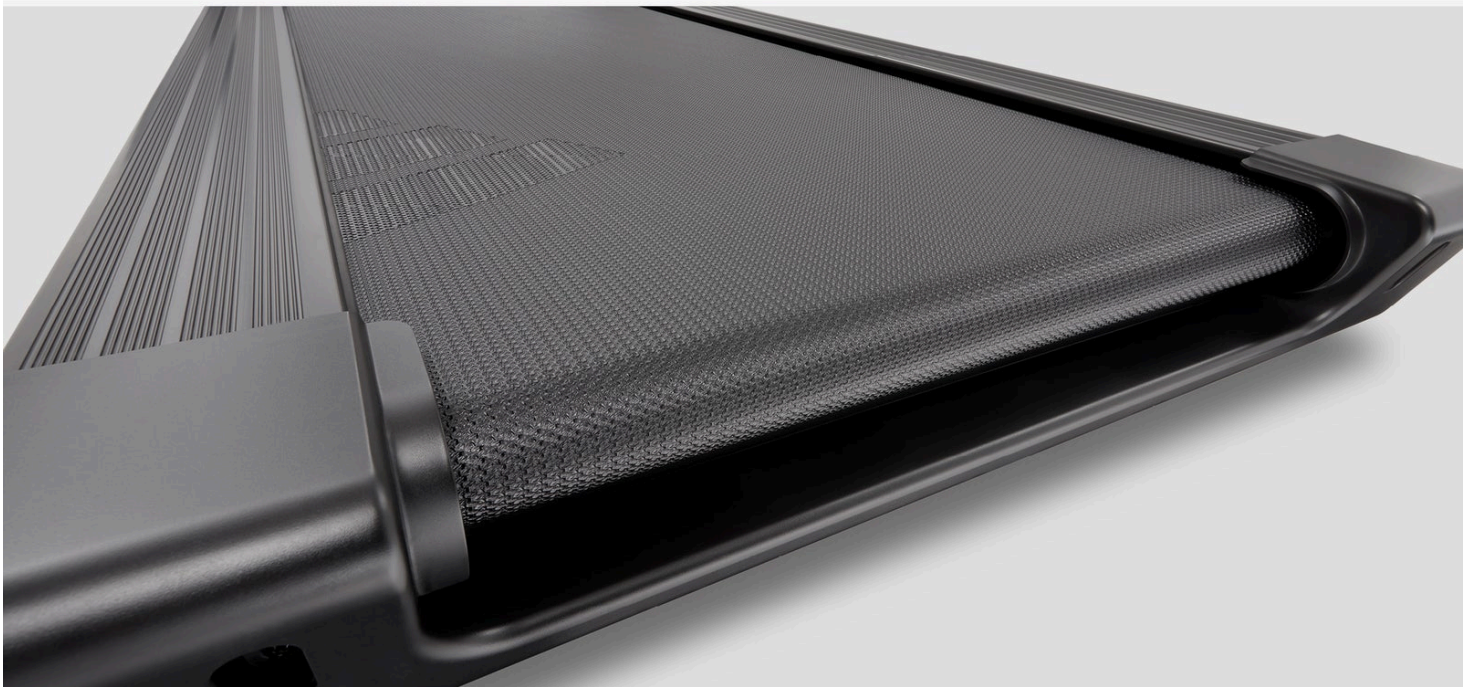
NRG CUSHIONING TECH



NRG cushioning technology helps to soften the impact on sensitive joints



Orthopaedic running belt further cushions the running surface





TAILOR + TRACK



15 electronic incline levels to adjust elevation



Console feedback: speed, time, distance, calorie, pulse, incline, and heart rate



24 pre-set, 3 custom and 3 target programmes





ADDITIONAL FEATURES



Hassle-free
self-lubricating
running belt



Integrated pulse
sensors on the
handles



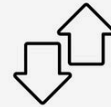
Recyclable &
polystyrene
free packaging



Easy to move
around with
built-in wheels



Dependable build
quality - 150kg
max. user weight



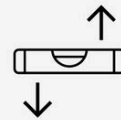
Quick access
speed &
incline buttons



USB
charging port



2 water
bottle holders



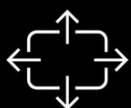
Floor level
adjustment



SETUP



Fixed running deck provides a stronger and more stable platform



Spacious 150 x 52cm running area

[w] 81.5cm



[l] 192.5cm

[h] 138.5cm

- 1 - 20 kph (0.6 - 12.4 mph) speed range takes you from a gentle walk to a fast sprint
- Powerful 4.5 HP brushless motor is lighter, quieter and more efficient than a standard motor
- 15 levels of electronic incline allow you to adjust the elevation and increase the challenge
 - Fitness programmes include 24 pre-set, 3 custom and 3 target
 - Quick speed and incline buttons on the handles create sharp interval transitions
- Integrated rotating tablet/phone holder allows you to follow workouts both on and off the T-23
- Zwift compatible - immersive running experience connects you with runners across the globe
- Kinomap compatible - run real-world routes, challenge your friends, and analyse workouts
 - adidas Console+ - access training apps, take-on workouts, and analyse your data
- Sleek LED console with speed, time, distance, calorie, pulse, incline, and heart rate feedback
 - Integrated hand pulse sensors allow you to quickly check your pulse on the move
- NRG cushioning technology softens impacts and helps to reduce strain on sensitive joints
 - Orthopaedic running belt further cushions the running surface
- Signature adidas Ultra Series red LED lighting surrounds the motor hood and console



- Spacious running area of 150 x 52 cm makes it suitable for runners of all heights
- Surround sound Bluetooth speakers wirelessly connect to your device for high-quality audio
 - Integrated USB charging port allows you to keep your devices charged while running
 - Two water bottle holders ensure you can easily stay hydrated
 - Fixed running deck provides a stronger and more stable training platform
 - Dependable build quality results in a high max. user weight of 150kg
- Built-in transport wheels make it easy to move the treadmill around your home
 - Packed in recyclable and polystyrene-free packaging
- Product Dimensions - 192.5 (L) x 81.5 (W) x 138.5 (H) cm / 75.8 (L) x 32.1 (W) x 54.5 (H) in.
 - Self-lubricating running belt allows for hassle-free maintenance
- Simple 25-minute setup with easy to follow assembly instructions and all tools included

ADDITIONAL
INFORMATION

More Information

Program	Fitness programmes include 24 pre-set, 3 custom and 3 target
Foldable	No
Warranty	Mainframe: 5 years, Motor: 4 years, Other parts: 1 year
Panel Design	Sleek LED console with speed, time, distance, calorie, pulse, incline, and heart rate feedback
Speed	1 - 20 kph
Product Dimension	192.5 (L) x 81.5 (W) x 138.5 (H) cm
Max Load	150kg
Motor Power	4.5 HP
Incline	15%
Running Area	150 (L) x 52 (W) cm